

# BRANCHES

## Holy Family Primary School, Luddenham

Phone: 8856 8300

Fax: 4773 4374

Web: [www.Luddenham.catholic.edu.au](http://www.Luddenham.catholic.edu.au)

Web: [www.hfluddenham.catholic.edu.au](http://www.hfluddenham.catholic.edu.au)

Dear Parents and Caregivers,

### Term 1

30th March 2017

Issue 5, Week 10

#### Friday 31st March

School Cross Country

#### Monday 3rd April

2:15pm - Easter Hat Making

#### Tuesday 4th April

Penrith RSL Anzac Service

(Mr McCauley & School

Leaders)

Razorback Cup (Stages 2 & 3)

#### Thursday 6th April

WSW Schools Cup

#### Friday 7th April

10:00am - Holy Week Liturgy/

Prayer

11:30am - Project Compassion

Market Day

1:30pm - Easter Hat Parade &

Raffle

Last Day of Term 1

#### Monday 24th April

Staff Development Day

#### Tuesday 25th April

Anzac Day - Public Holiday

#### Wednesday 26th April

First day of Term 2 for

students

#### Friday 28th April

9:30am - New Life Mass

#### Monday 1st May

NSW Cricket Leadership Forum

(Stages 2 & 3)

#### Tuesday 2nd May

Parramatta Diocesan Cross

Country

Recently we appealed to our school community to support the Wentworth-Brown family (Sam, Chris, Ellie & Jack) who were severely impacted by the bushfires in rural NSW. Through this appeal we were able to make a significant donation of clothes and toys. Following is an extract from an email I received from Mrs Bruni who coordinated the delivery of the donations to the Wentworth-Brown family last weekend.

#### *What a weekend!*

*We got into Dunedoo around 6pm on the Saturday. Checked into the Swan Motel and then organised to meet up with Sam and Chris for dinner at the only hotel in town.*

*The hotel was packed, full of locals and volunteers there to help out over the weekend. We met locals from Coonabarabran, they were there helping with the fencing and what ever needed to be done at all the properties. One husband and wife team knows only too well the effect of bushfires, they had lost everything they had in the bushfires around Coonabarabran four years ago. While eating dinner, we were listening to all the stories of what happened, the Sir Ivan fires affected 140 families.*

*We got up Sunday morning and headed out to Sam and Chris's property. They showed us where the fire started by a lightning strike. Showing us thousands of hectares of land that was burnt and with a little bit of rain, life was coming back to the countryside. We travelled some more and then was shown where the fire jumped over the Golden Highway and headed straight for them. This was on the Sunday, when the fire was classed catastrophic. The fire was travelling faster than the fire trucks trying to get ahead of it to contain it. We went past the remains of a once fully operational wool shed and cattle yards. Nothing was left but a pile of tin and steel. We travelled further, went over a cattle grid, I was in the car with Sam, Ellie, Skye and their dog Pipper. As we pulled up to another pile of twisted tin and steel, Ellie yelled out "Yeah we are home! Come on Skye I will show you where my room was." I got an instant lump in my throat. The only thing standing is piles of bricks where the old oven and fire were.*

*As we walked around the house you could see the outlines of what was once the water heater, fridge, washing machine and even a deep fryer, but nothing else. It made me feel physically sick to see how once a home full to the brim of memories, possessions and life was now nothing, a mess, not even ash. The fire was that hot it was like it ate everything! Sam must have seen me struggling, she came up to me to give me a hug and asked if I was alright!*

*They lost the chicken coop, garden shed, machinery shed, horse yards, hay shed, even the silos holding grain were still warm from the fire, "They must still be burning" said Chris. Everything was gone.*

#### At Holy Family

I Respect Myself

I Respect Others

I Respect the  
Environment

I Respect Learning



*We met a man named Ray, he is a retired farm hand that was originally from Billpin. He had heard what had happened, only knowing Chris and Sam through friends of friends, turned up one day and said that he was there to help in anyway. He had been staying there with his own caravan and generator making sure only legit people come onto the property and also helping Chris clean up and do the fencing.*

*We then drove the car over to two shipping containers that was donated to them. As Chris opened one up, to his surprise there were two piles of dog food on the left and on the right shopping bags of food. Someone had dropped them off for them and they didn't know who or when.*

*As the boxes from Holy Family were being unpacked, both Chris and Sam were overwhelmed with the generosity, their jaws dropped when they saw that the clothing and toys from the school were majority brand new! Jack yelled out "This is like Christmas!"*

*They packed clothing and items into the car that they could use now and the rest into the container that they can use when they get somewhere to live together. Someone wrote a note to Ellie and Jack and this touched Sam so much that she had to walk away.*

*We unloaded everything and all of them said thank you over a thousand times. They are so very very thankful and overwhelmed with the generosity our little school gave to them.*



In partnership let us continue to work to develop in the children strong minds and gentle hearts.

Mr Anthony McElhone

Principal

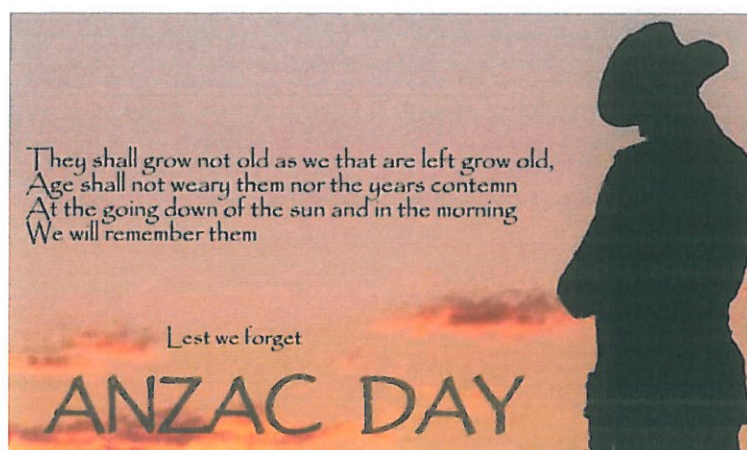


### Easter School Holidays/Anzac Day

School will close on Friday 7th April at 3.15 p.m. and re-open on Wednesday 26th April. Monday 24th April will be a staff development day and 25th April is Anzac Day.



Please note that Holy Family students will be participating in the annual ANZAC Day commemoration to be held at Warragamba. An invitation is extended to all students and their families to attend this important local and national day of commemoration. The commemoration service will begin at 11:00am and will conclude by midday. The march begins outside the Neighbourhood Centre and proceeds to the Town Hall where the commemoration ceremony is held. *Please complete the online form on Seesaw to indicate if your child/ren will be participating this year (this will be uploaded next week). We look forward to seeing as many from our community in attendance at this important local and national commemoration.*



### Principal's Medallions

Congratulations to the recipients of the Principal's Medallion at assembly last week. Liana C, Patrick C, Mariah G, Harry G, Luke R, Alexis K & Zac R.



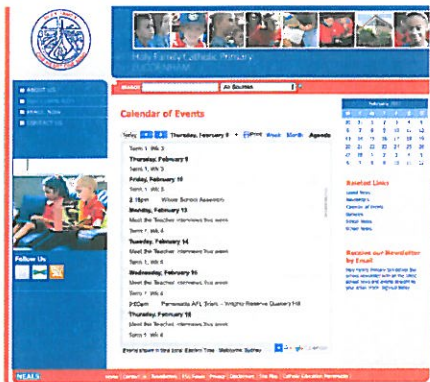
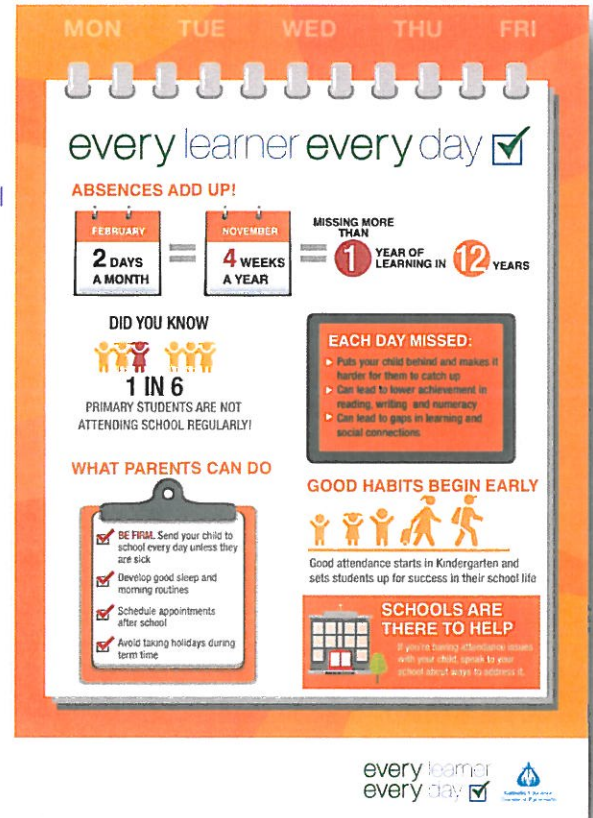


## School Attendance

Every Learner, Every Day is a campaign designed to raise awareness about the importance of attendance for every student, on every school day and to promote a healthy attendance culture. As part of this initiative members of our Attendance Team, Mrs Marie Edwards, Mr Anthony McElhone and Sr Brenda Kennedy, will be regularly following up students with attendance levels that are concerning. In addition we will be promoting positive attendance patterns by acknowledging classes and individuals with excellent attendance.

Our current attendance level is 87%. We need to improve this and we can do it together. Parents and carers can do a few simple things!

1. Send your child to school every day unless they are sick
2. Develop good sleep and morning routines
3. Schedule appointments outside of school hours
4. Avoid taking holidays during the school term.



## 2017 School Calendar

The key date of events and celebrations for 2017 can be viewed in our online school calendar. The calendar can be viewed on our school website <http://www.hfluddenham.catholic.edu.au/calendar-of-events>

If you would like to sync the school calendar to the calendar on your device (e.g. iPad or iPhone ) click on the [+ Google Calendar](#) icon at the bottom of the webpage and follow the instructions.

## School Contact Details

Please note the school has a new phone number - 8856 8300. If you call the previous number (02 4773 4485) it will divert to the new number. Our school email address remains unchanged [luddenham@parra.catholic.edu.au](mailto:luddenham@parra.catholic.edu.au).

## Sports News

We are looking forward to the School Cross Country on Friday, 31st March. If you have volunteered to assist, please meet Mrs Hall at Sales Park. If it needs to be postponed due to wet weather a decision will be made as early as possible and communicated via Seesaw. Our backup date is Monday 3rd April.

Good luck to the Stages 2 & 3 Rugby League teams. They are competing in the Razorback 7-a-side Rugby League competition on 4th April at Currans Hill.





### Process for Dealing with Complaints, Issues or Concerns

From time to time, parents may have an issue with something that occurs in the classroom or within the school community. Initially concerns should be addressed with the child's class teacher directly, however, if not able to be adequately addressed at this point, it is recommended that the concern be addressed through a member of the school leadership team. In the case that a satisfactory outcome is unable to be achieved, a formal process is available for complaints handling. Our school has aligned its approach to complaints handling using the model proposed in the Diocesan Complaints Handling procedure. A copy of this document can be accessed on the school website.



As parents, it is very important that you don't make critical comments about your child's teacher in front of your children. Negative comments can result in a lack of respect and undermine the efforts of the staff. My advice to parents that if there is any concern raised about learning or behaviour by your child, that you would approach the classroom teacher in the first instance to obtain a clearer picture of what has taken place. This should be done in a respectful and dignified manner, to enable accurate information about the issue to be obtained.

It is not appropriate to direct a concern about a child directly to the child involved. Such behaviour is intimidating, even if thought to be innocent. In all cases we ask you to direct any concerns to the school for investigation.

### Winter Uniform

As we head into Term 2 students should make the change from Summer to Winter uniform. By the start of Week 3, Monday 15th May (after Mother's Day) it is expected that all children will be wearing the correct Winter uniform.

The uniform is:

Girls: Check pinafore

White blouse (Peter Pan Collar)

Tab tie - matching material of pinafore

Plain, short white socks or navy blue tights

Black leather shoes

Boys: Blue shirt (long sleeved) and school tie

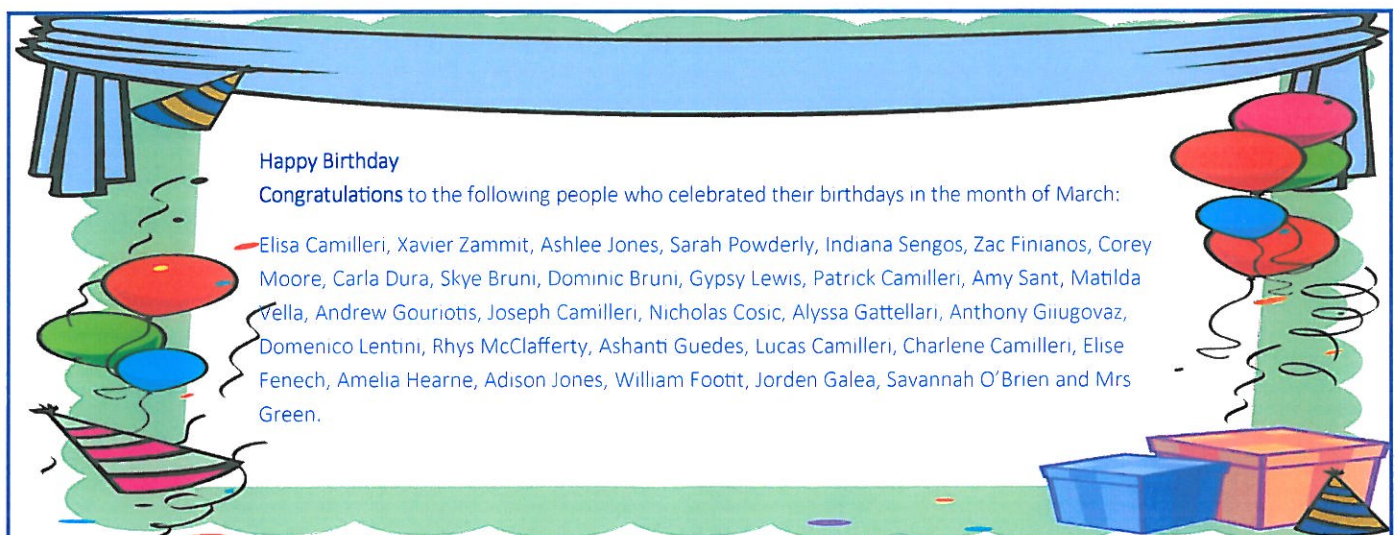
Navy long trousers (cargo pants are not permitted)

Short navy socks

Black leather shoes



Sport Uniforms will continue to be worn by every student on the same days as Term 1. Please check with the front office if you have any questions regarding the school uniform.

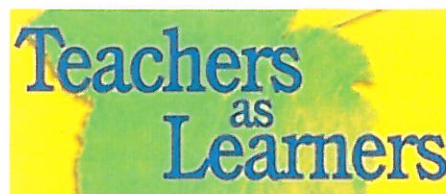




## Teacher Professional Learning

At Holy Family the staff has an ongoing commitment to professional learning. The staff benefits from attending inservices, in curriculum areas, that assist them in providing quality learning opportunities for the students in their class. The following staff have or will attend professional learning:

Date	Staff Members	Professional Learning
3rd April	Mrs Beamish	Reframing Readers Resourcefully (R3)
4th April	Mrs Van As	Extending Mathematical Understanding (EMU) Yr 1 Ongoing Professional Learning Day
4th April	Mr McElhone	Mentor Coaches Professional Learning
6th April	Mr McElhone	Student Attendance and Exemption Procedures
6th April	Mr McCauley, Mr Platt, Mrs Hughes	Stage 2 Literacy Professional Learning
24th April	All Staff	Staff Development Day - PBS4L
27th April	Mr McElhone, Mrs Van As	Safeguarding & Professional Standards



## Academic Achievement Awards

### Congratulations Academic Achievement Awards Recipients

Taleah Eades  
Leta-May Munday  
Lucas Camilleri  
Lacey Andrews  
Daniela Finianos  
Justin Buttigieg  
Elisabeth Franco  
Jacob Davies

Nelson Lopreiato  
Georgia Tyrrell  
Ciara Awad  
Luke Cassar  
Matthew Urschel  
Joshua Moore  
Nathan Attard  
Sarah Gleeson

Cameron Rzepecki  
Alyse Penza  
Melissa Giugovaz  
Marcus Reynolds  
Marcus Bruni  
Stefanie Krilich

## One Heart One Mind Awards

### Congratulations One Heart One Mind Awards Recipients

Isabella Cocksedge  
Hunter Moore  
Christian Lentini  
Hayleigh Garousse  
Tahlee Lewin  
Seth Obereigner  
Darbbey Vella  
Annalise Searle

Amelia Pelle  
Kaitlin Azzopardi  
Julia Krilich  
Nakita Guedes  
Tiahna Scicluna  
Jessica Gattellari  
William Baldacchino  
Sarah Macri

Matthew Vial  
Matilda Fagan  
Gypsy Lewis  
Ashanti Guedes  
Suzie Mammone  
Angela Baric

### **What is NAPLAN?**

The National Assessment Program – Literacy and Numeracy (NAPLAN) is an annual national assessment for all students in Years 3, 5, 7 and 9. All students in these year levels are expected to participate in tests in reading, writing, language conventions (spelling, grammar and punctuation) and numeracy. All government and non-government education authorities have contributed to the development of NAPLAN materials.

### **Why do students do NAPLAN tests?**

NAPLAN is the measure through which governments, education authorities, schools, teachers and parents can determine whether or not young Australians are meeting important educational outcomes in literacy and numeracy. The tests provide parents and schools with an understanding of how individual students are performing at the time of the tests. They also provide schools, states and territories with information about how education programs are working and what areas need to be improved.

NAPLAN tests are one aspect of a school's assessment and reporting process; they do not replace the extensive ongoing assessments made by teachers about each student's performance.

### **What will be tested and how?**

NAPLAN tests the sorts of skills that are essential for every child to progress through school and life, such as reading, writing, spelling, grammar and numeracy. NAPLAN content is aligned with the Australian Curriculum. For more information on this, please see the NAP website:

[www.nap.edu.au](http://www.nap.edu.au)

Questions are multiple-choice or require a short written response. The writing task requires students to write a text in response to a prompt.

To give you an idea of what the tests look like, sample questions and a sample writing task are available on the NAP website.

### **Who will run the tests?**

NAPLAN tests are conducted at schools and administered by classroom teachers, school deputies or principals. Each state and territory is responsible for marking the tests in accordance with strict guidelines and processes.

### **How can I help my child prepare for the tests?**

NAPLAN assesses literacy and numeracy skills that students have already been learning through the school curriculum. Teachers will ensure students are familiar with the test formats and will provide appropriate support and guidance.

Help your child prepare for NAPLAN by reassuring them that NAPLAN tests are just one part of their school program, and reminding them on the day to simply try their best. The use of services by coaching providers is not recommended.

If you have any questions about your child's preparation for NAPLAN, you should make a time to speak with their teacher.

### **What additional support can schools provide for students with special needs?**

All students are encouraged to participate in NAPLAN tests. Students with disability may qualify for adjustments that reflect the support normally provided in the classroom. Students who have a temporary injury may also be reasonably accommodated.

A formal exemption may be granted for a student with significant intellectual disability and/or significant coexisting conditions, or for a student who has recently arrived in Australia and has a non-English speaking background.

Your school principal and your state testing authority can give you more information on special provisions or the process required to gain a formal exemption.



### How is NAPLAN performance measured?

NAPLAN is not a pass-or-fail type test. Individual student performance is shown on a national achievement scale for each test. Each test scale has 10 bands and all year levels are reported on the same scale. Six bands are reported for each year level for each test. One of these bands represents the national minimum standard for students at each year level. A result at the national minimum standard indicates that the student demonstrated the basic literacy and numeracy skills needed to participate fully in that year level. The performance of individual students can be compared to the average performance of all students in Australia.

### What happens if my child is absent from school on test days?

Where possible, schools will organise for individual students who are absent at the time of testing to complete missed tests at another time during the testing week. Individual students are not permitted to sit tests after Friday 12 May 2017.

### Will I receive a report on my child's performance?

A NAPLAN report will be issued by your school later in the year. The same report format is used for every student in Australia. The school will notify you when the reports are being sent to you. If you do not receive a report, you should contact the school. Individual student results are strictly confidential.

### How are NAPLAN test results used?

- Schools use results to identify strengths and weaknesses in teaching programs and to set goals in literacy and numeracy.
- School systems use results to review programs and support offered to schools.
- Students and parents may use individual results to discuss progress with teachers.
- Teachers use results to help them better identify students who require greater challenges or additional support.
- The community can see average school NAPLAN results on the My School website: [www.myschool.edu.au](http://www.myschool.edu.au)

### Where can I get more information?

For more information about NAPLAN:

- visit the NAP website [www.nap.edu.au](http://www.nap.edu.au)
- contact your child's school
- contact your state or territory's education authority (details available on the NAP website).

For ACARA's privacy policy, go to:

[www.acara.edu.au/contact-us/privacy](http://www.acara.edu.au/contact-us/privacy)

### NAPLAN 2017 tests timetable

	Tuesday 9 May	Wednesday 10 May	Thursday 11 May
Year 3	language conventions 40 minutes writing 40 minutes	reading 45 minutes	numeracy 45 minutes
Year 5	language conventions 40 minutes writing 40 minutes	reading 50 minutes	numeracy 50 minutes
Year 7	language conventions 45 minutes writing 40 minutes	reading 65 minutes	numeracy 60 minutes
Year 9	language conventions 45 minutes writing 40 minutes	reading 65 minutes	numeracy 60 minutes

- Language conventions test includes spelling, grammar and punctuation.
- Numeracy test includes number and algebra; measurement and geometry; and statistics and probability.
- Calculators are **not** permitted in the numeracy test in Years 3 and 5. In Years 7 and 9, each student will sit one numeracy test. This test will have two parts: one where calculator use is permitted and one where it is not.





# ASKME 4

Commercial &  
Residential  
General Maintenance

- Lawn & Garden Care
- Gutter Cleaning
- Rubbish Removal
- Pressure Cleaning  
(Driveways & Paths)
- Fertilising
- Hedges
- Yard Clean Ups

**TERRY**

PH: 0405 665 730

E: [t.a.flan@hotmail.com](mailto:t.a.flan@hotmail.com)

ABN: 893 274 373 78

**PROMPT, RELIABLE SERVICE!**

**AVAILABLE 7 DAYS**

**CALL FOR A QUOTE!**